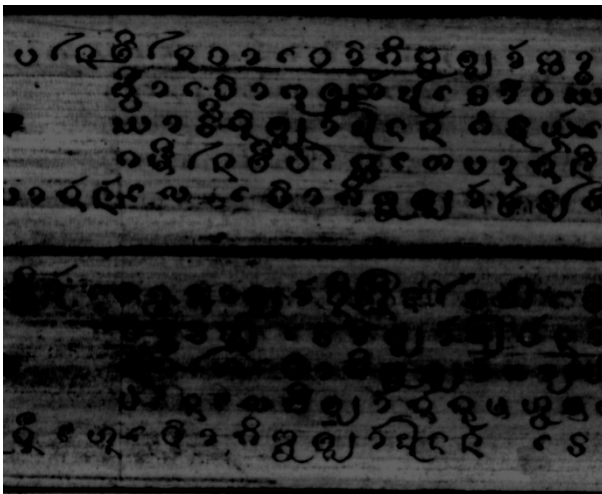
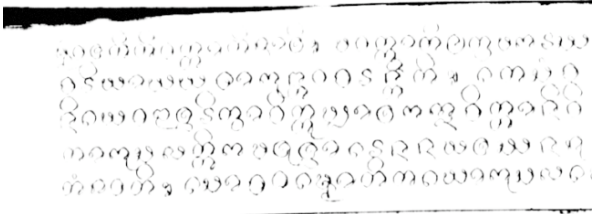
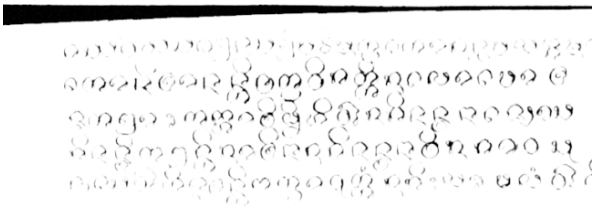


DLLM Image Enhancements using Adobe Photoshop

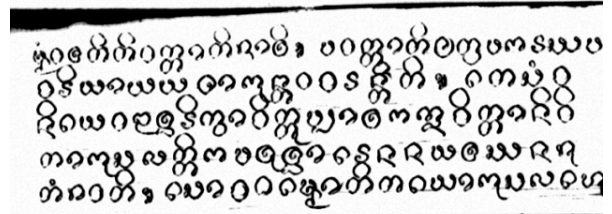
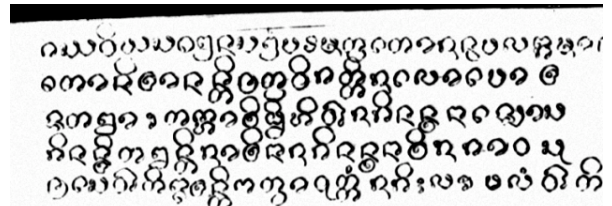
In order to process the huge number of images in the digital library, the digitisation of the PLMP microfilm collection was done by automatic batch. This has the disadvantage that it was not possible to make adjustments to individual images. However, in some cases where downloaded images are difficult to read, significant improvements can be made using image enhancement tools such as those found in Adobe Photoshop.

The following examples illustrate how legibility can be improved:

Before enhancement

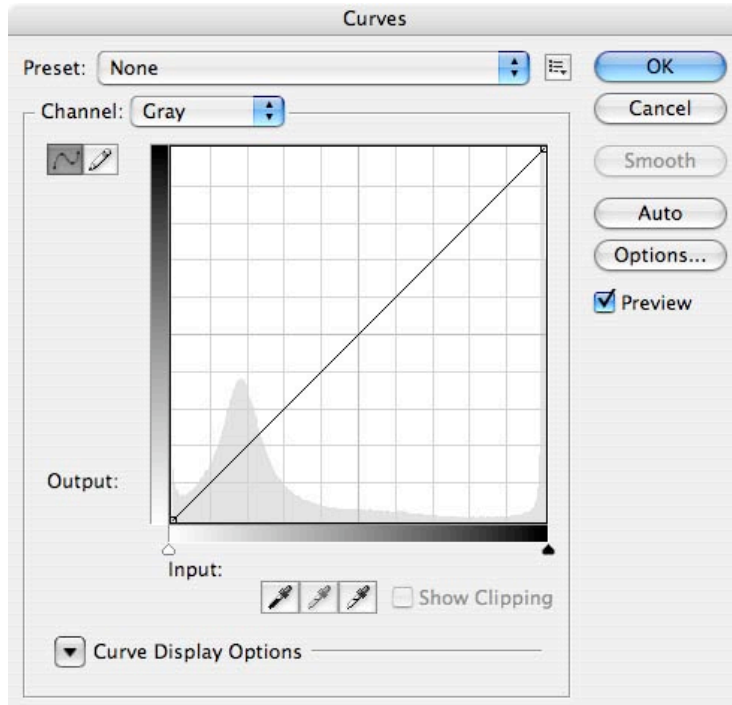


After enhancement



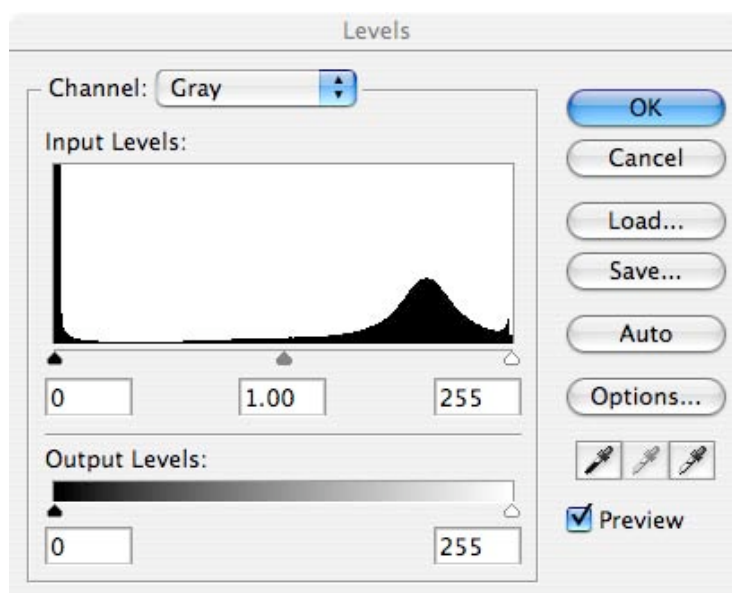
DLLM Image Enhancements using Adobe Photoshop

1. The Gradation curve



The Curves Tool is found under the Adjustments option of the Image menu. It is a very useful tool to adjust the tonal values. Points can be selected on the curve, whereby the position represents the tonal value. That is, a point on the middle of the curve represents the middle tones, etc. Points can be added anywhere on the curve, but the quality is better when few points are used.

2. The tonal correction

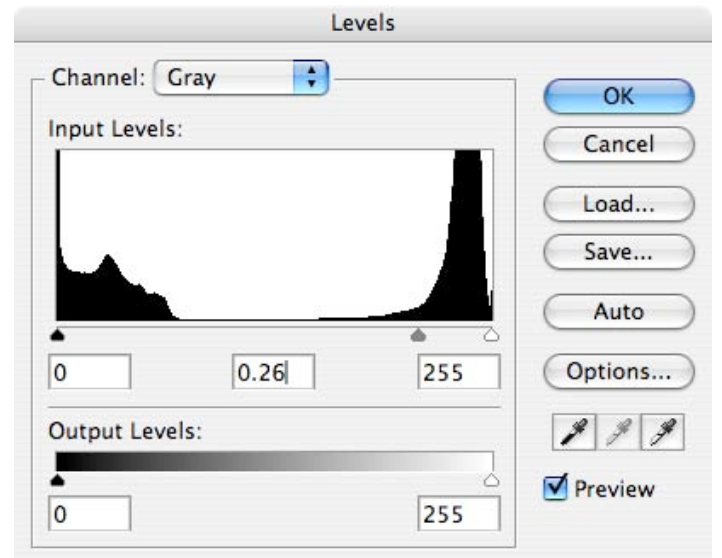
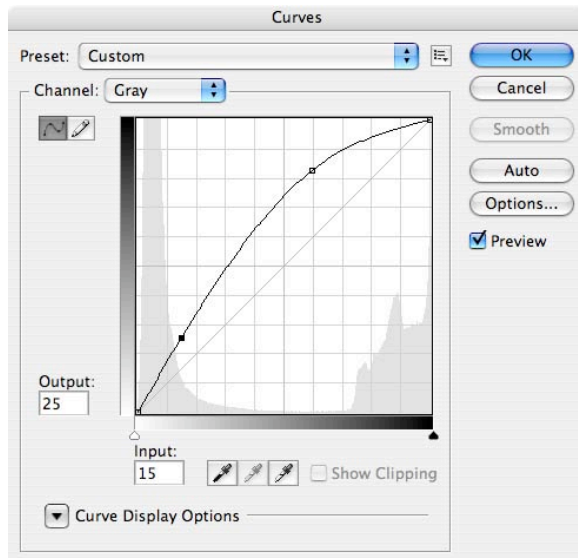


Tonal values can also be adjusted using the Levels Tool, which is also found under Adjustments option of the Image menu. Three adjusters can be set: for dark tonal values, for midtones, and for light values. The tonal values can be changed by sliding these adjusters to the left or right.

DLLM Image Enhancements using Adobe Photoshop

1. Examples

These two settings are for too pale images.



These two settings are for too dark images.

